

LINCOLN  
PROPERTY  
COMPANY

FOR  
LEASE

**30 TECHNOLOGY PARKWAY** NORCROSS, GA 30092

**Hunter Henritze**  
hhenritze@lpc.com  
404.924.2819

**Matt Fergus**  
mfergus@lpc.com  
404.990.4227

**Seabie Hickson**  
shickson@lpc.com  
404.376.1295

**Lincoln Property Company**  
3405 Piedmont Road, NE., Suite 450  
Atlanta, GA 30305

## BUILDING FACTS:

- Single story Office/Flex building
- Opportunity to create loft-office space with 18' clear ceilings
- Direct access to the new constructed courtyard amenity space
- 40' x 120' bays with rear grade-level access
- Newly design outdoor meeting space
- 4.12/1,000 parking ratio
- Ample retail and dining options within short drive, including The Forum on Peachtree Parkway



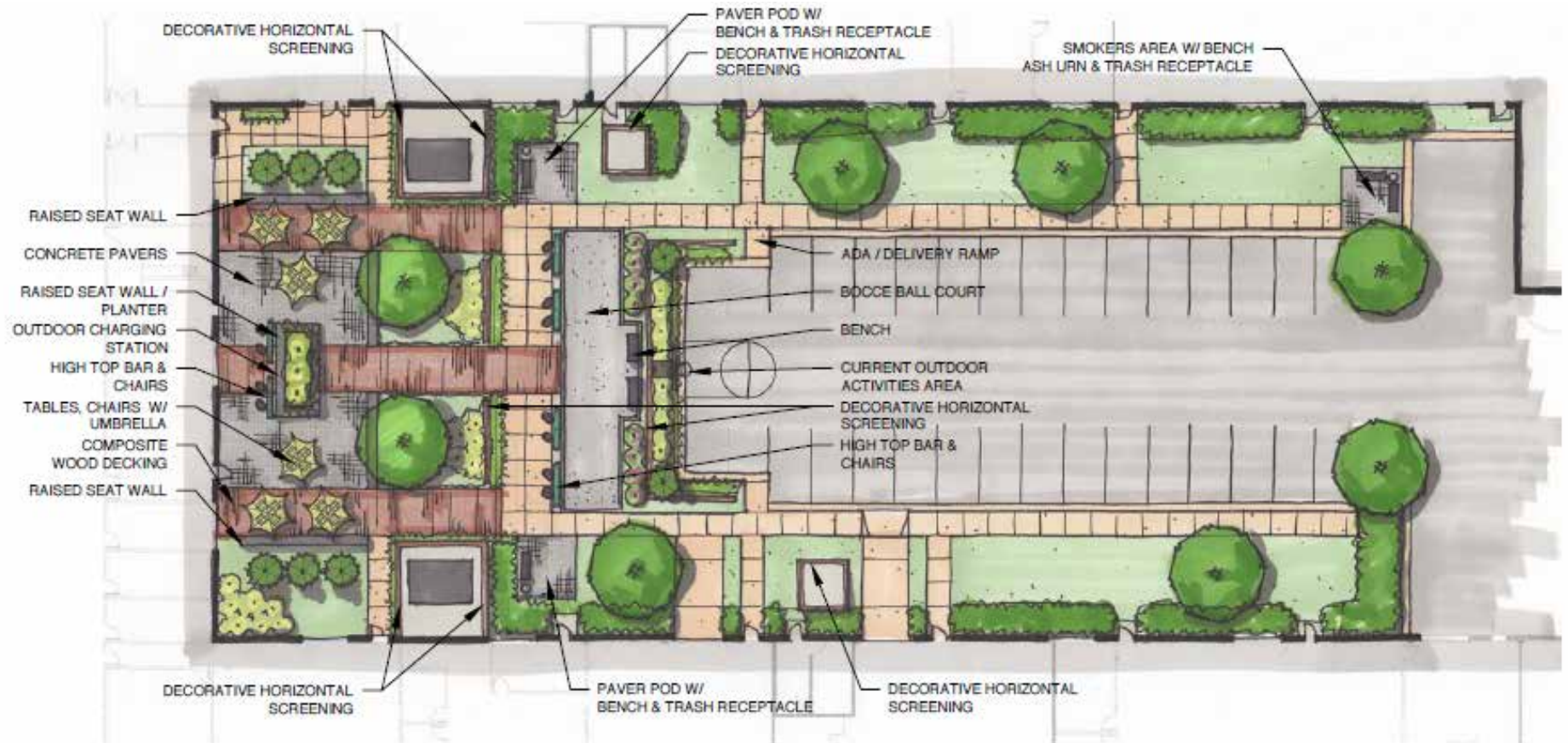


# CREATIVE INTERIORS





# COURTYARD AMENITY SPACE





# PEACHTREE CORNERS TECHNOLOGY PARK TRAIL

30 Tech Park is optimally located to take full advantage of the trail and its wide reach. Peachtree Corners is in the midst of developing plans for an 11-mile multi-use trail system to run throughout the city. The first phase of the project will connect Medlock Bridge Road with Peachtree Parkway through Technology Park, using existing gas and sewer easements as partial routes.

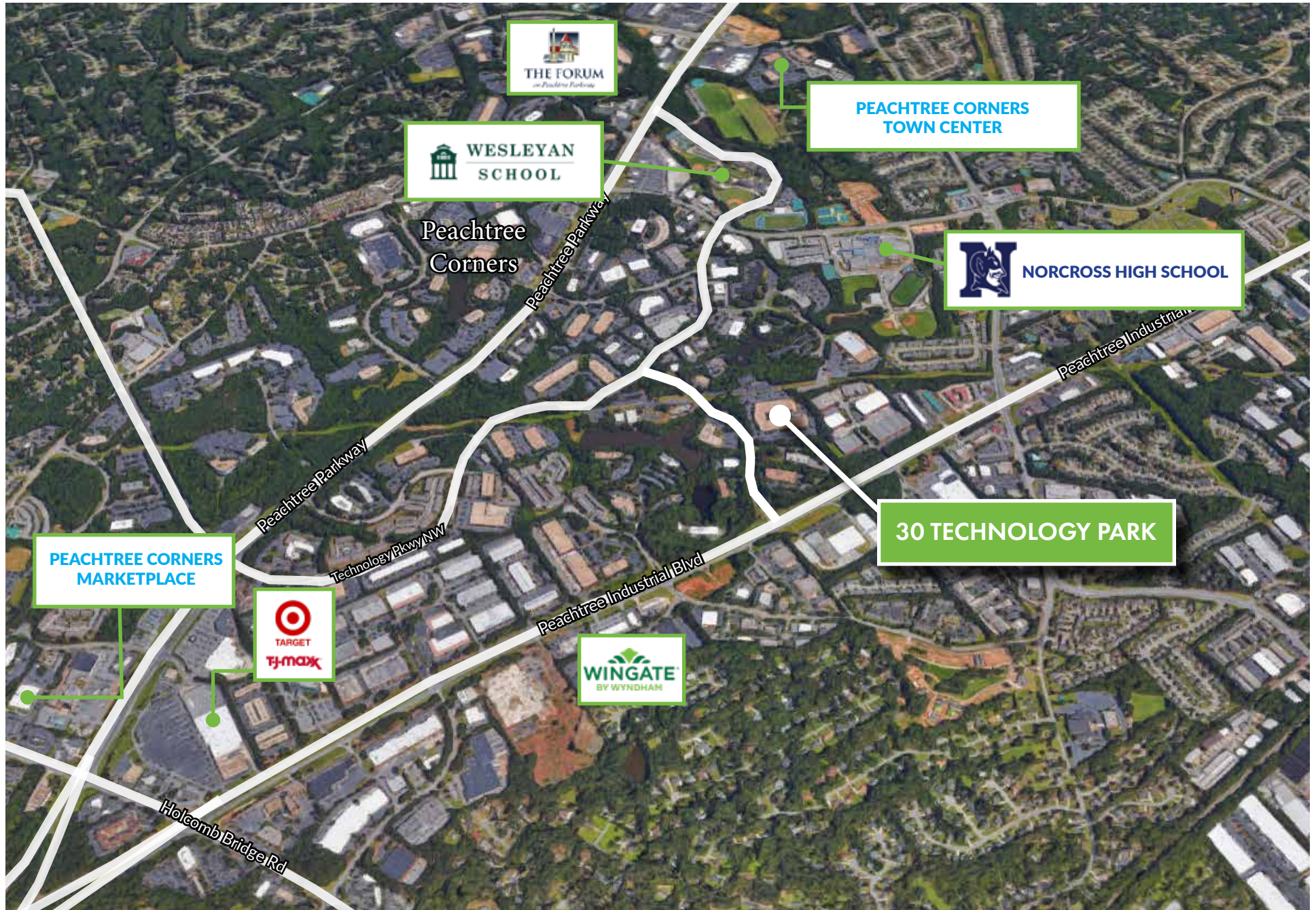
Ultimately, the trail will encircle the city linking residential and retail areas and creating links to Technology Park and other spaces.

To learn about other exciting Peachtree Corners developments and infrastructure projects visit [www.peachtreecornersga.gov](http://www.peachtreecornersga.gov)





# LOCATION AND AMENITY MAP





**30 TECHNOLOGY PARKWAY**  
PEACHTREE CORNERS, GA 30092

For additional information, please contact:

**Hunter Henritze**     **Matt Fergus**  
hhenritze@lpc.com     mfergus@lpc.com  
404.924.2819     404.990.4227

**Seabie Hickson**  
shickson@lpc.com  
404.376.1295

**Lincoln Property Company**  
3405 Piedmont Road, N.E., Suite 450  
Atlanta, GA 30305  
404.266.7600  
[www.lpcsoutheast.com](http://www.lpcsoutheast.com)

**LINCOLN  
PROPERTY  
COMPANY**

