



A dynamic,
workday-to-
night office
environment
defining the
Midtown
Techtangle

C I R C A
7 3 0



STAY AND WANDER

CONVO-DRIVEN DINING OPTIONS

- (A) EL VINEDO (COMING SOON)
- (B) ESCORPION
- (C) FOOD HALL 6TH & PEACHTREE ST
- (D) TAKOREA
- (E) BARAONDA RISTORANTE & BAR
- (F) BABS
- (G) FOOD HALL AT CODA
- (H) THE CANTEEN (FOOD HALL)
- (I) MARY MAC'S TEA ROOM
- (J) NEGRIL VILLAGE ATLANTA
- (K) THE LAWRENCE
- (L) FRESH TO ORDER
- (M) ECCO
- (N) HUDSON GRILLE
- (O) KAT'S CAFE
- (P) EMPIRE STATE SOUTH
- (Q) 10TH & PIEDMONT
- (R) FLYING BISCUIT CAFE
- (S) CACTUS HOUSE
- (T) CAFE INTERMEZZO
- (U) SOUTH CITY KITCHEN
- (V) METROFRESH
- (W) MELLOW MUSHROOM
- (X) APRES DIEM
- (Y) PARK TAVERN

BREWS OF ALL KINDS

NEARBY COFFEE AND HAPPY HOUR LOCALE

- (1) DANCING GOATS COFFEE BAR
- (2) STARBUCKS
- (3) STARBUCKS
- (4) CARIBOU COFFEE
- (5) VORTEX
- (6) SALTWOOD CHARCUTERIE & BAR
- (7) TORCHED HOP BREWING COMPANY
- (8) CYPRESS STREET PINT & PLATE
- (9) THE NOOK ON PIEDMONT PARK
- (10) SWEET HUT BAKERY & CAFE

SLEEP SPOTS

HAND-SELECTED HOTELS FOR YOUR CLIENTS AND VISITORS

- (1) HOTEL INDIGO ATLANTA MIDTOWN
- (2) THE GEORGIAN TERRACE
- (3) GEORGIA TECH HOTEL & CONFERENCE CENTER
- (4) RENAISSANCE ATLANTA MIDTOWN HOTEL
- (5) HYATT ATLANTA MIDTOWN
- (6) REGENCY SUITES HOTEL
- (7) HOMEWOOD SUITES BY ATLANTA MIDTOWN
- (8) HILTON GARDEN INN ATLANTA MIDTOWN
- (9) LOEWS

Wander Widely

Within a 1 mile walk of Circa 730

30+

BARS AND EATERIES

9

HOTELS

10,360

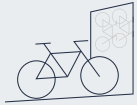
RESIDENTIAL UNITS

GRAB AND GO

CONVENIENCE-DRIVEN DINING OPTIONS

- (1) CHICK-FIL-A
- (2) WILLY'S MEXICANA GRILL
- (3) KALE ME CRAZY
- (4) FIVE GUYS
- (5) PAPI'S CUBAN & CARIBBEAN GRILL
- (6) PITA PIT
- (7) JIMMY JOHNS
- (8) WHICH WICH
- (9) ARDEN'S GARDEN
- (10) THE VARSITY
- (11) TROPICAL SMOOTHIE CAFE
- (12) ZAXBY'S CHICKEN FINGERS
- (13) HIGHLAND BAKERY

Disrupting the Status Quo



7:30A | ALT COMMUTE

Rolling in early by bike (and skipping a half-hour of ATL traffic) starts the day off right. Score priority parking at the bike valet—first in gets the best spot!



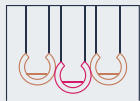
8A | HIT THE FITNESS STUDIO EARLY

Off to the studio for some light weights and cardio to get the morning going. The Circa studio is a great outlet for a quick sweat and with brand new equipment, lockers, and showers, it's simple to make time for wellness.



10A | EMBRACE THIRD PLACE

Second coffee time. Head down to the F&B to enjoy the daily grind and some much-needed third-place.

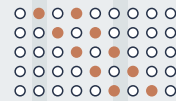


12P | NO SAD DESK LUNCH HERE

Eat al fresco and people-watch from the swings on the Circa porch. Catch-up on emails in the shade. Best alt-office on Peachtree.

Workday-to-Night Amenities

From **7:30A** to **7:30P**, there's no time like the present at Circa 730



2P | AFTERNOON BRAINSTORM

Impromptu charrette-and-conquer session with the marketing team in the open lobby lounge (a short distraction courtesy of the interactive pixel wall).



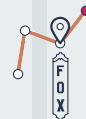
4P | COMMUNITY COLLAB

Wrap the work day with an 'all team' meeting in the Circa conference room. Complete with ClickShare technology, impromptu sharing is easy and effective in conquering the daily agenda.



5P | HAPPY HOUR > RUSH HOUR

A round of specialty cocktails—and all the tapas—with the crew in the usual booth on the window line. A perfect way to switch gears.



7:30P | OUT ON THE (MID)TOWN

Walk next door to the Fox for a night of laughs (comedy special!) with great company. Then walk to the North Avenue MARTA Station entrance just across the street.

Feeling inspired for another day of unexpected at Circa 730.

From workday-to-night, Circa 730 revolves around you

Defining the Techtangle of Midtown's hustling innovation hub, Circa 730 is a dynamic, workday-to-night office environment that revolves around the life and workstyles of ATL's tech-minded and entrepreneur-spirited.



Capturing tireless curiosity in bold strokes

Delivered in 2019, the bar-raising repositioning is purposefully, playfully designed to redefine and reinvigorate its community.

As it embodies the unequalled energy, creativity, and drive of the Southeast's startup epicenter, Circa 730 toggles effortlessly between past and present.



Between rush hour and happy hour

For flexible lunch hours, dinner hours and cocktail hours — head to El Viñedo, Circa's South American inspired tapas and wine bar set to debut soon.



Inviting conversation, defying convention

Sculptural suspension swings and an interactive light-art installation, the city's first interactive pixel wall, invite conversation and contemplation—while defying convention



Workspace as unique as your mission

From exposed ceilings to exposed concrete, abundant glass to abundant views, the spec studios at Circa 730 are designed to deliver a better workday.



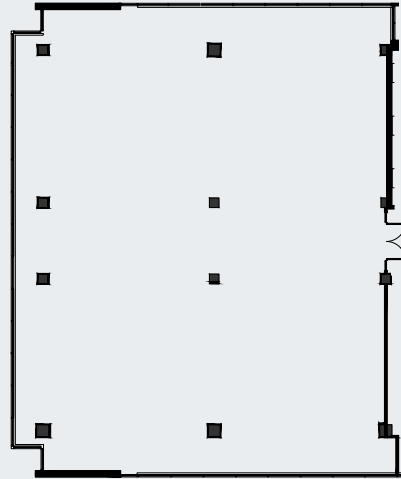
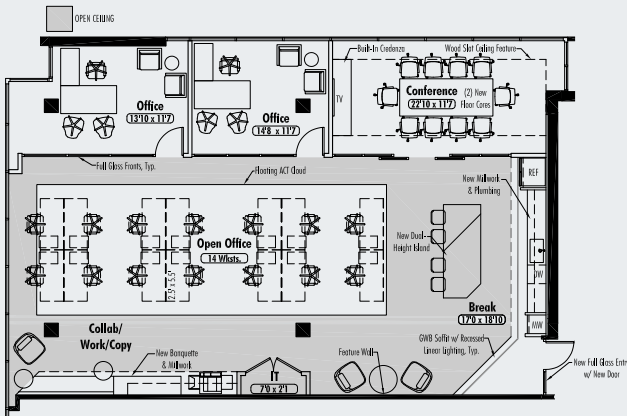
In the heart of Midtown's Techtangle

No matter your method of transport —by foot, bike, MARTA, ride share, or car— Circa 730 is within a short distance.

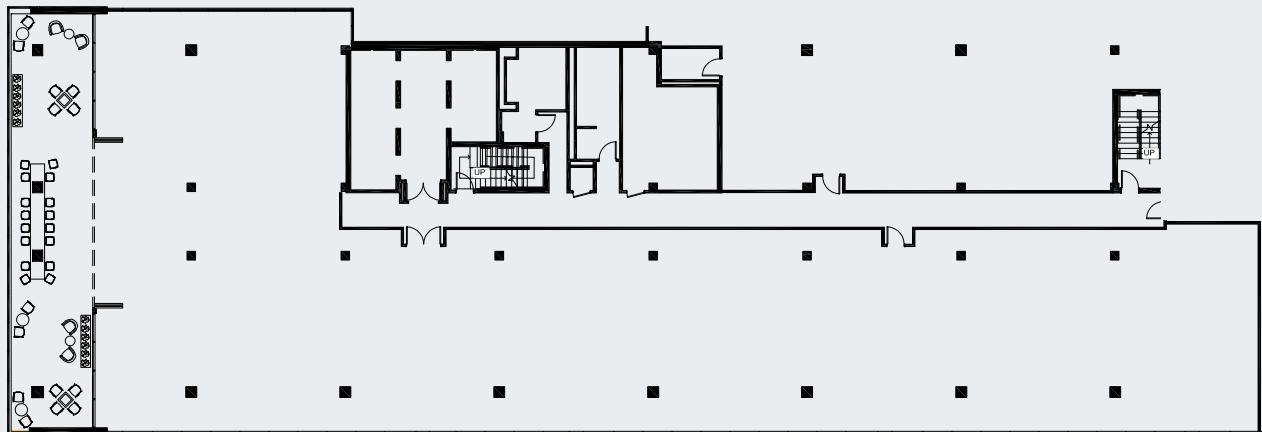
2,605 - 11,877 SF of Dynamic Suites Available

Spec Suite 680 | 2,605 RSF

Flexible Spec Suite



Loft Suite 250 | 11,877 RSF | Private Patio Facing Peachtree Street



Private Covered Loft Patio

Circa730.com



For more information on Circa 730, please contact:

Hunter Henritze
 hhenritze@lpc.com
 404.924.2819

Caroline Fisher
 cfisher@lpc.com
 404.924.2816

Robert deGolian
 rdegolian@lpc.com
 678.498.7683

Michael Howell
 mhowell@lpc.com
 404.926.1640